

1 GENERAL INFORMATION

1	GENERAL INFORMATION	3
1.1	GENERAL DESCRIPTION	3
1.2	BASIC DELIVERY SCOPE OF SC1000 ON WHEEL CHASSIS WITH 10.1 M PLATFORM	8
1.3	WARRANTY TERMS	11

Sales, Service and After sales

Plettac Ltd
Tel.: +380 (44) 364 9304, 364 9305

info@plettac.ua
www.plettac.ua

1 GENERAL INFORMATION

1.1 GENERAL DESCRIPTION

The **SCANCLIMBER SC1000** can be used either as a single or twin mast climbing work platform. It is designed to position men with their tools and other necessary equipment and material for working in high heights.

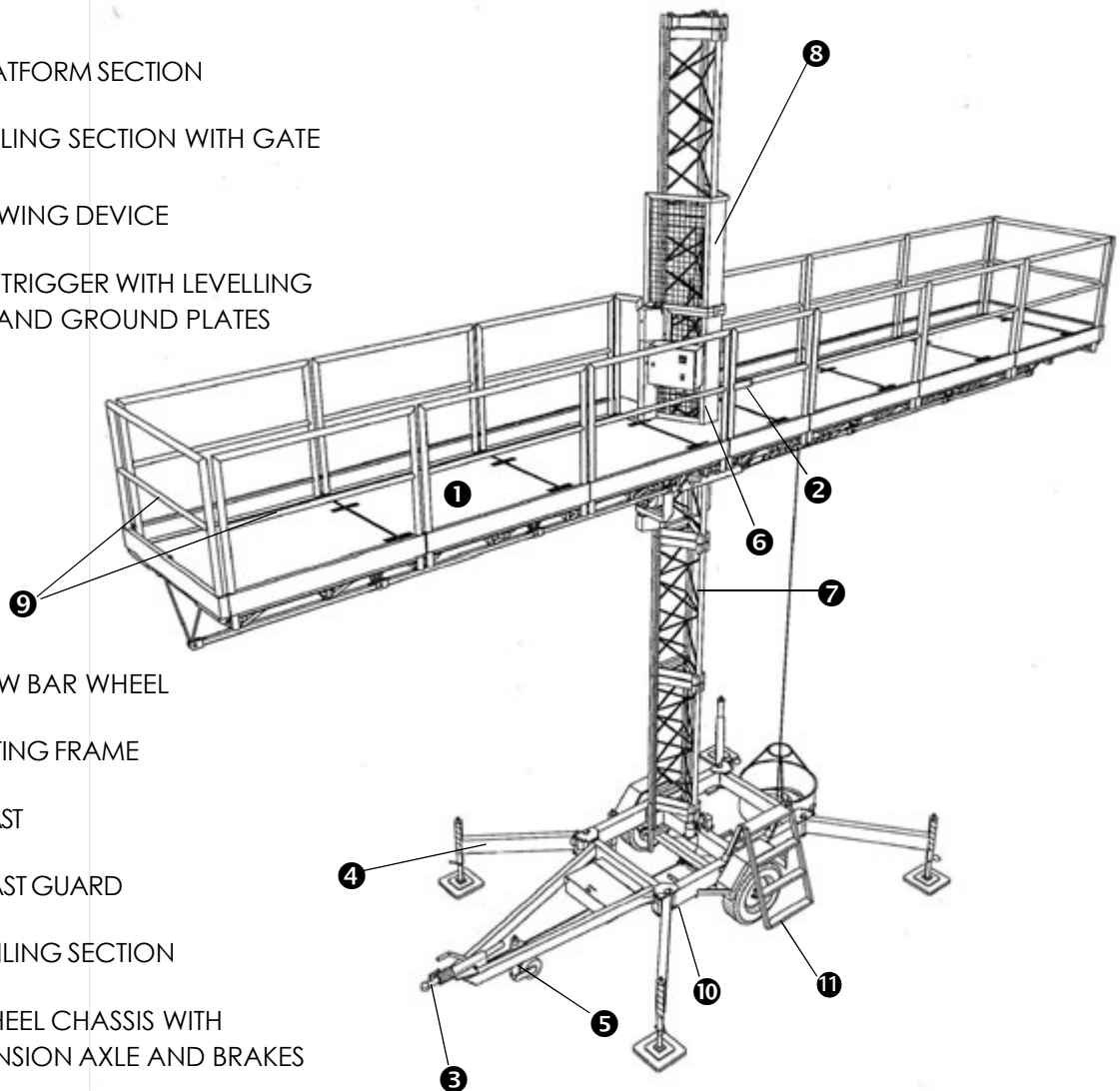
SCANCLIMBER SC1000 can be used for all kinds of work: assembly, finishing, cladding and painting of buildings, facade

work and industrial objects. It can be installed indoors as well as outdoors.

The platform is operated up and down with push-buttons on pendant control station. On the station there is also an emergency stop push-button.

SCANCLIMBER SC1000 consists of chassis, mast and platform modules which are connected to the lifting frame.

- ❶ PLATFORM SECTION
- ❷ RAILING SECTION WITH GATE
- ❸ TOWING DEVICE
- ❹ OUTRIGGER WITH LEVELLING JACK AND GROUND PLATES
- ❺ TOW BAR WHEEL
- ❻ LIFTING FRAME
- ❼ MAST
- ❽ MAST GUARD
- ❾ RAILING SECTION
- ❿ WHEEL CHASSIS WITH SUSPENSION AXLE AND BRAKES
- ⓫ STAIRS



C1-99020-1

Drawing 1.1. SC1000 on wheel chassis.

Wheel chassis consists of a welded frame with suspension axle with brakes and four telescopic outriggers which can be turned out with levelling jacks. They are used for setting the mast in vertical position. Chassis drive unit is available for the wheel chassis to make the travel at worksite easier.

Towing of the **SCANCLIMBER SC1000** at worksite is possible with a tow device.

TOWING SC1000 ON PUBLIC STREETS IS POSSIBLE ONLY IF THE REGULATIONS OF EACH COUNTRY ALLOW IT!

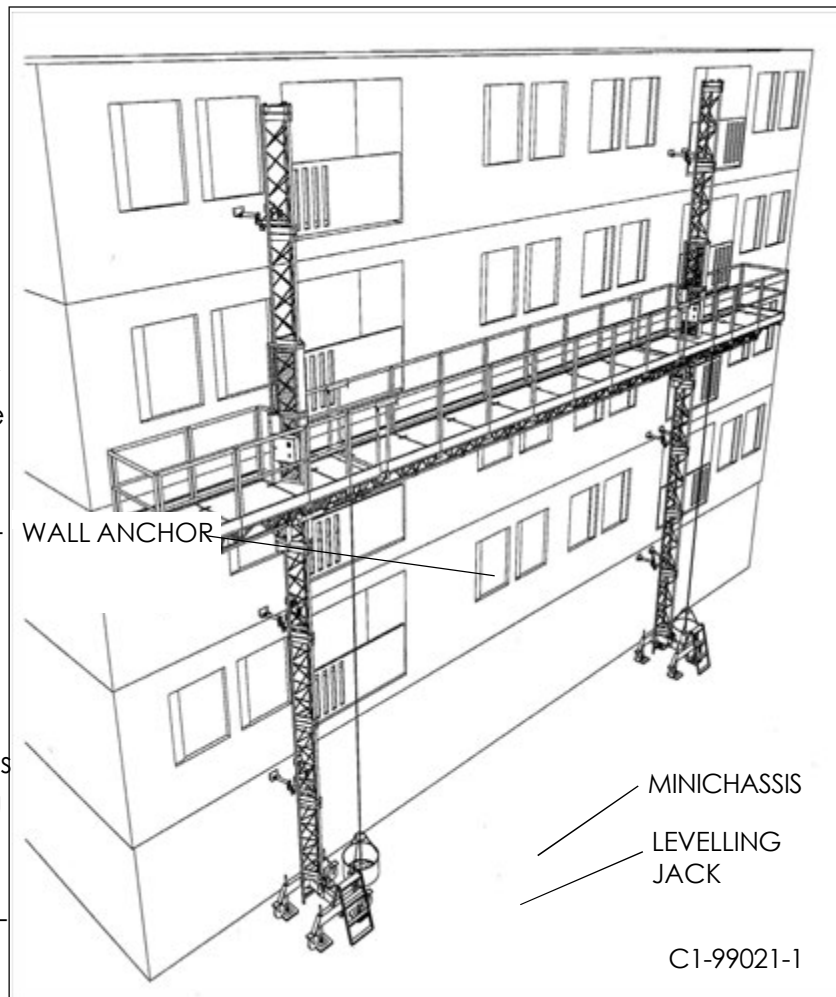
Mast consists of lattice structure mast sections which are assembled one on top of the other and connected with the mast bolt sets. On one side of the mast section there is the rack for platform drive

Top cap is bolted on the top of the mast. It works as a mechanical stopping device.

Top cap is also used as a hoist point when lifting mast sections or whole **SCANCLIMBER SC1000**.

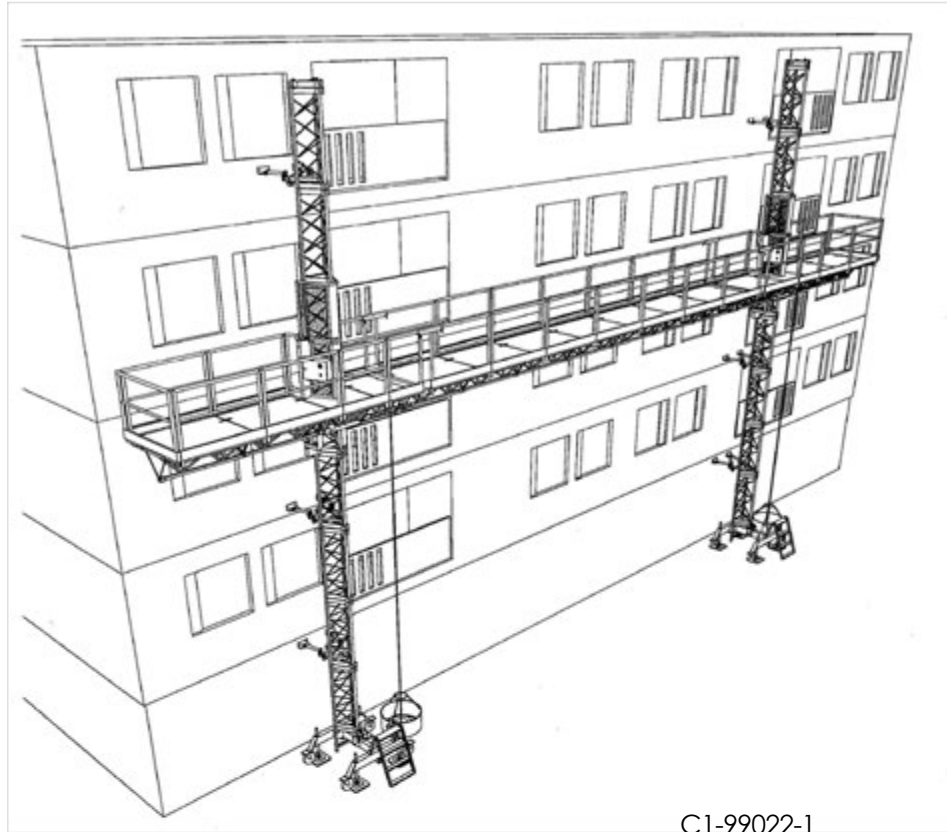
The maximum lifting capacity of the top cap is 2500 kg.

The freestanding height of mast, assembled onto the wheel chassis, is limited. By using the anchoring system it is possible to reach the maximum height of 100 m. The minichassis has been designed for the narrow and close worksites.



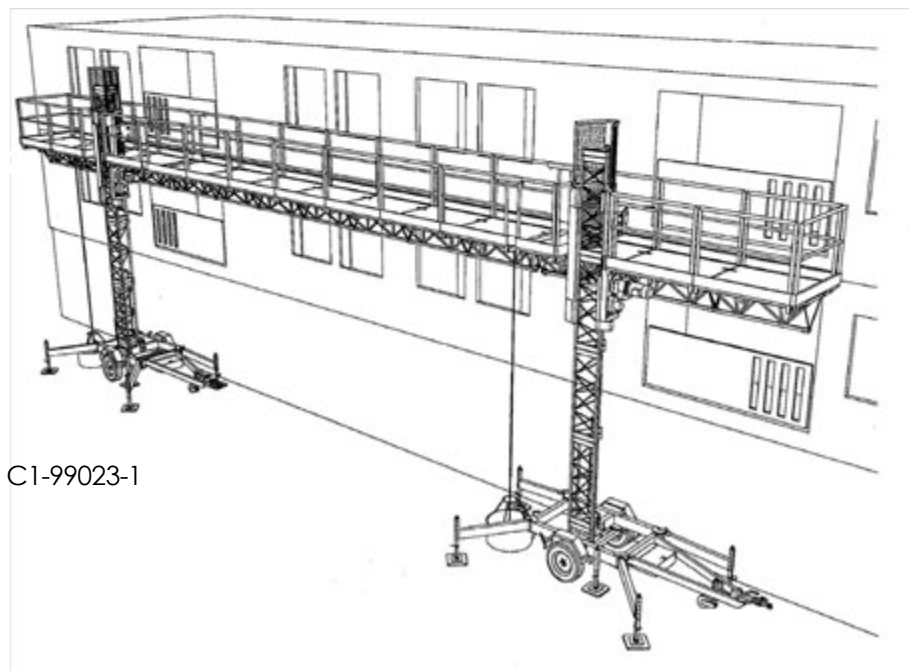
*Drawing 1.2.
SC1000 single on minichassis.*

By connecting two **SC1000 SINGLE MASTS** together with platform hinged joints you will get a **TWIN** with wider and more efficient working area.



C1-99022-1

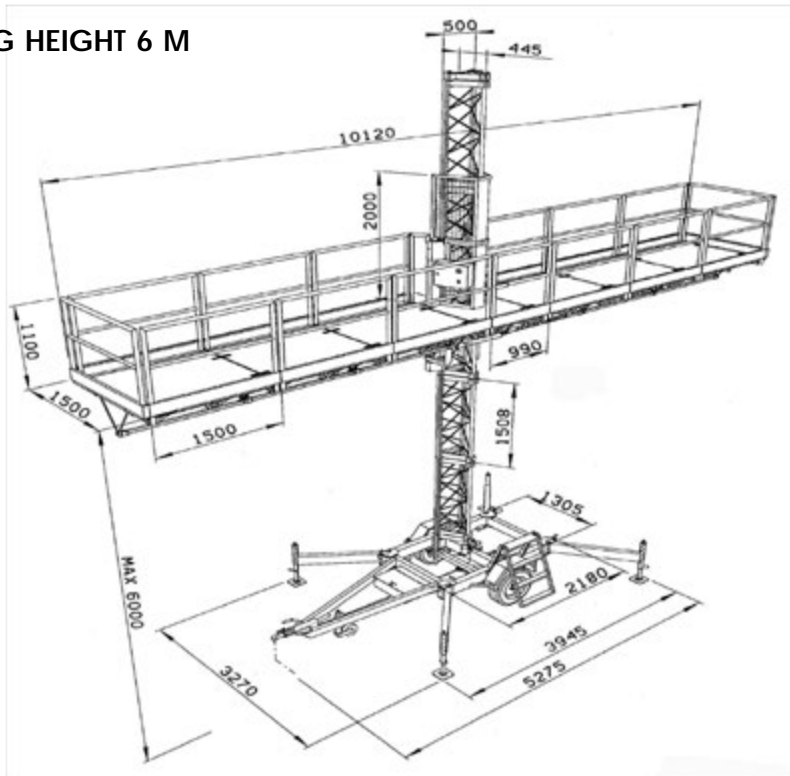
Drawing 1.3. SC1000 twin on minichassis.



C1-99023-1

Drawing 1.4. SC1000 twin on wheel chassis, free standing.

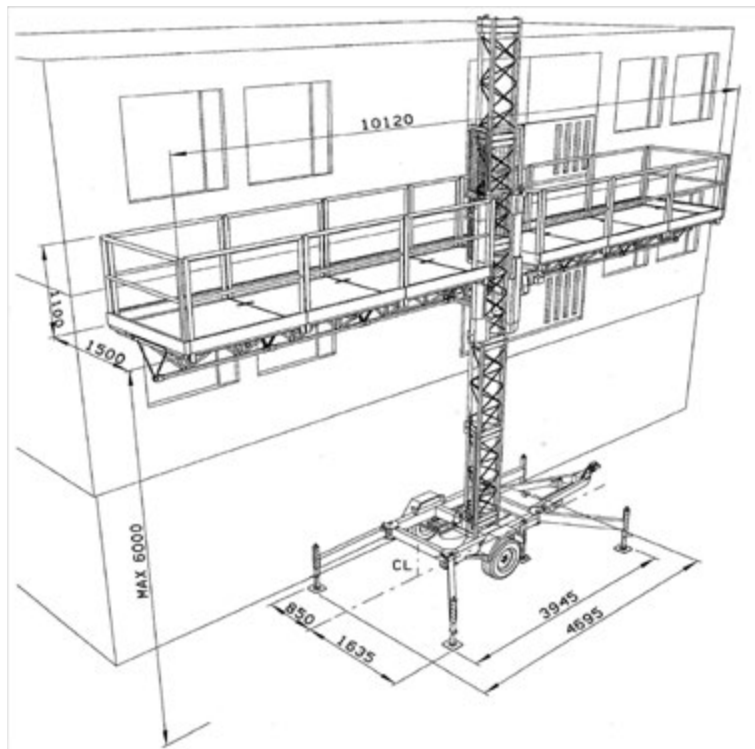
FREESTANDING HEIGHT 6 M



Drawing 1.5. SC1000 single with dimensions. All outriggers are turned out.

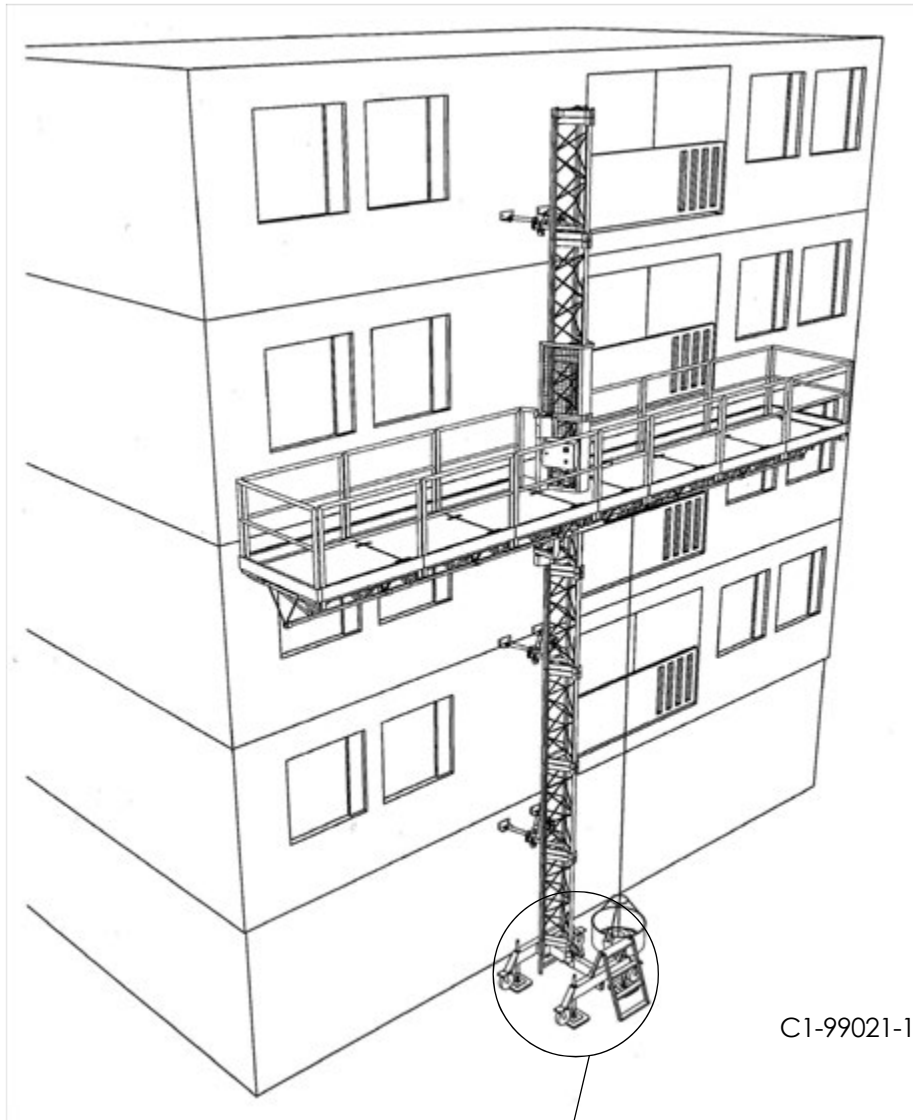
C1-99024-1

FREESTANDING HEIGHT 6 M



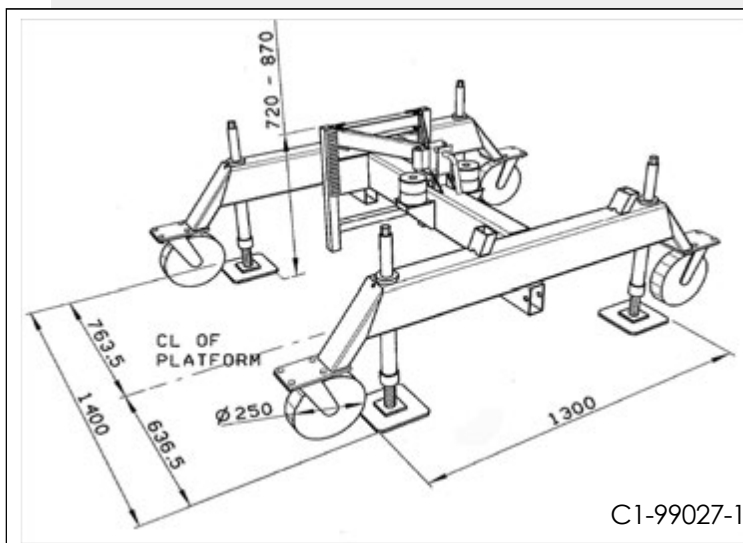
Drawing 1.6. SC1000 single with dimensions. Outriggers are extended, but turned out on mast side only.

C1-99025-1



C1-99021-1

Ø:



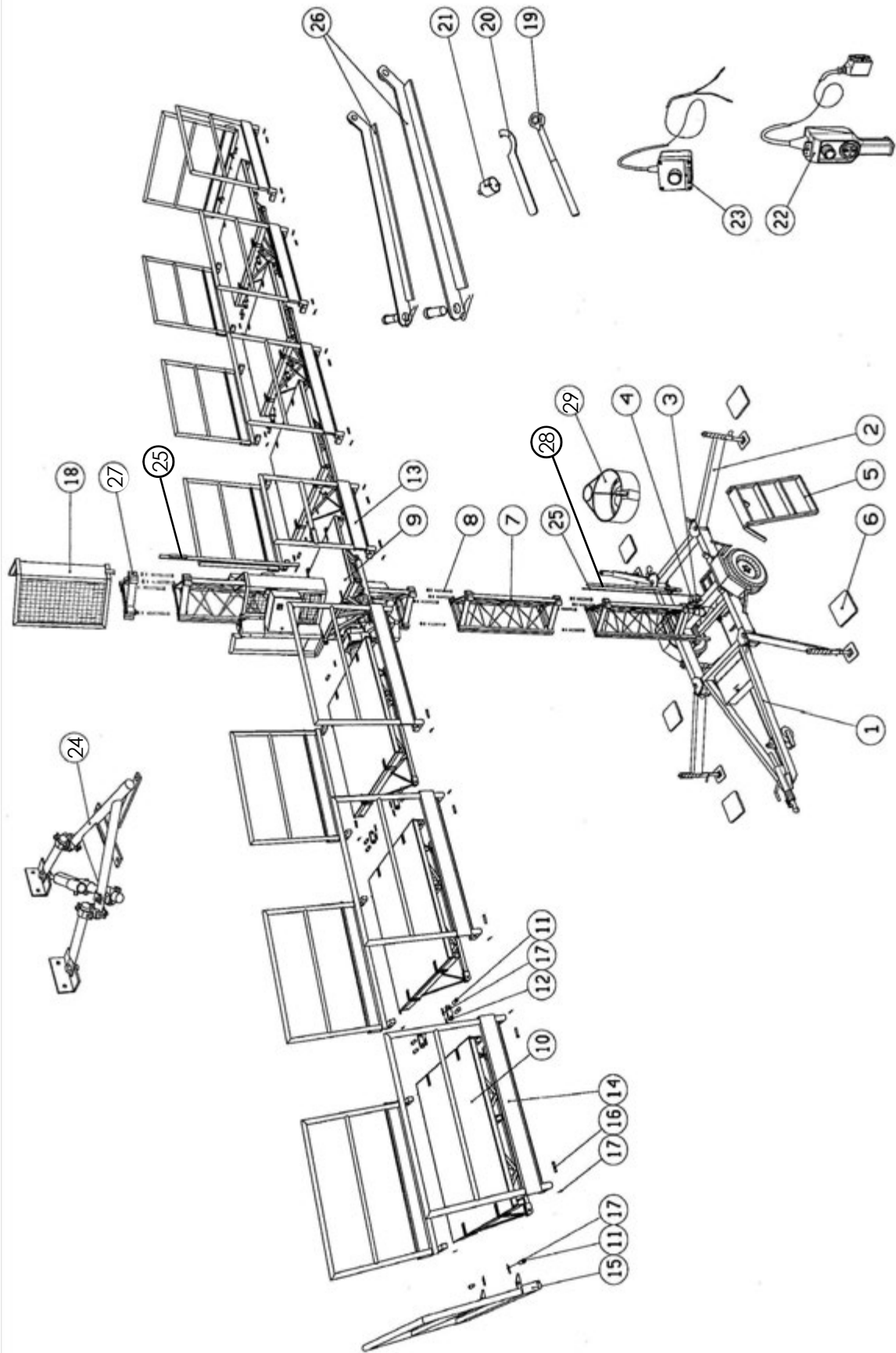
C1-99027-1

Drawing 1.7. SC1000 single on minichassis. Minichassis with dimensions.

1.2. BASIC DELIVERY SCOPE OF SC1000 ON WHEEL CHASSIS WITH 10.1 M PLATFORM (SEE PICTURE NO. C1-99028)

item description	pcs
1. Wheel chassis	1
2. Telescopic outrigger with levelling jack	4+1
3. Cushion rubber	2
4. Transportation lock	1
5. Ladder	1
6. Ground plate	5
7. Mast section	x)
8. Mast screw set	4 pcs / mast section
9. Mast top cap	1
10. Platform section (1,50m x 1,50m)	6
11. Mounting pivot	30
12. Railing coupler Ø 24 mm	8
13. Gate railing	1
14. Railing (1,50m)	12
15. End railing	2
16. Mounting pivot of the railing Ø16 mm	26
17. Cotter	56
18. Mast guard net	1
19. Special tool (for jacks)	1
20. Special tool (for guiding rollers)	1
21. Special tool (for safety brake)	1
22. Remote control for vertical drive of the platform	1
23. Remote control for safety brake test	1
24. Anchor set	x)
25. Counter part of the limit switch (upper and lower position)	2
26. Transport support	2
27. Top part	1
28. Signalling part	1
29. Drum cable	1

x) *Depending on the mast height*



Drawing 1.8.
 SC1000 single on wheel chassis with 10,1 m platform - basic delivery scope.

C1-99028-1

TABLE OF PART QUANTITIES, WHICH ARE DEPENDEND ON MAST HEIGHT

Parts and units, quantity of which depends on the mast height are specified in the following table.

Double the quantities for twin.

Description	Scancode	Mast height/m									
		20	30	40	50	60	70	80	90	100	
		Quantity/pcs									
1. Mast section		13 (26	20 40	27 54	33 66	40 80	47 94	53 106	60 120	67x) 134)	
1.1. Mast bolt		52 (104	80 160	108 216	132 264	160 320	188 376	212 424	240 480	268 536)	
2. Wall anchors		4 (8	5 10	7 14	9 18	10 20	12 24	14 28	15 30	17 34)	
Min. quantity of anchors for mast on wheel chassis											
Min. quantity of anchors for mast on minichassis		6 (12	7 14	9 18	11 22	12 24	14 28	16 32	17 34	19 38)	
x) Basic unit includes one assembled mast section.											

1.3. WARRANTY TERMS



The seller warrants new **SCANCLIMBER** mast climbing work platform is supplied free from defects in material and workmanship. The warranty is valid for six (6) months from the date of delivery. The warranty of the equipment and parts manufactured by sub contractors is limited to the warranty of their respective manufactures.

The warranty does not cover:

1. damage or loss caused by transportation
2. damage or loss caused by misconduct, misapplication or accident
3. damage or loss caused by negligence of instructions, service, maintenance or storage
4. normal deterioration of the equipment and damage resulting from wearing parts: material like rubber tyres, electrical equipment etc.
5. damage or loss caused by maintenance or repairs performed by a nonauthorized service personnel
6. damage or loss caused by purchaser's acts or omissions causing alterations to the quality or structure of mast climber
7. any such indirect damage or loss as loss of profit and downtime cost etc.

No claim will be accepted if non-original parts, not approved of by the seller, have been used.

Warranty claims should be done in writing describing the damage as completely as possible and sent to the address below within fourteen (14) days from the date of disclosure of the damage.

address:

OY SCANINTER NOKIA LTD
Rantaperkiönkatu 1 C 11
FIN-33900 TAMPERE, FINLAND

The warranty liability is limited, at the sellers discretion to

- (1) replacing the damaged part or
- (2) repairing the damaged part by the seller or by a subcontractor or
- (3) granting a price reduction

The warranty of replaced or repaired part expires at the expiration time of the warranty of the mast climber.

The purchaser is obliged to send the damaged part to the seller for inspection by a request. Replaced or refunded parts become the property of the seller.